



# Diesel Trash Pump Self Priming Centrifugal Pump

Diesel Engine Driven  
Models 2V6–F4L912T



Size 6" x 6"

Total Head		Capacity of Pump in U.S. Gallons per Minute (GPM) at Continuous Performance				
P.S.I.	Feet					
60.7	140	100	100	100	100	100
52.0	120	480	540	540	540	540
43.4	100	640	860	920	920	920
34.7	80	750	960	1110	1230	1260
26.0	60	790	1020	1200	1360	1490
17.3	40	830	1060	1270	1460	1595
Suction Lift		25'	20'	15'	10'	5'

## PUMP SPECIFICATIONS

**Size:** 6" x 6" NPT (152 mm x 152 mm) Male.

**Casing:** Stainless Steel N° 316. Maximum Operating Pressure 94 psi (6.6 kg/cm<sup>2</sup>)\*.

**Open Type, Two Vane Impeller:** Stainless Steel N° 316. Handles 3" (76.2 mm) Diameter Spherical Solids.

**Impeller Shaft:** Stainless Steel 17-4PH.

**Replaceable Wear Plate:** Stainless Steel N° 316.

**Removable Cover Plate:** Stainless Steel N° 316.; 50 lbs. (23 kg).

**Bearing Housing:** Stainless Steel N° 316.

**Intermediate Bracket:** Stainless Steel N° 316.

**Seal Plate:** Stainless Steel N° 316.

**Seal:** Mechanical, Oil-Lubricated, Double Floating, Self-Aligning. Silicon Carbide Rotating and Stationary Faces. Stainless Steel N° 316. Stationary Seat. Fluorocarbon Elastomers (DuPont Viton® or Equivalent). Stainless Steel No. 18-8 Cage and Spring. Maximum Temperature of Liquid Pumped 160°F (71°C)\*.

\* Consult Factory for Applications Exceeding Maximum Pressure and/or Temperature Indicated.

**Flap Valve:** Neoprene w/Steel Reinforcing.

**Shaft Sleeve:** Alloy Steel No. 4130.

**Radial Bearing:** Open Single Ball.

**Thrust Bearing:** Open Double Ball.

**Bearing Lubrication:** Oil.

**Flanges:** 125# Gray Iron No. 30.

**Gaskets:** Buna-N, Compressed Synthetic Fibers, PTFE, Vegetable Fiber, Cork, and Rubber.

**O-Rings:** Buna-N.

**Hardware:** Standard Plated Steel.

**Pressure Relief Valve:** Brass.

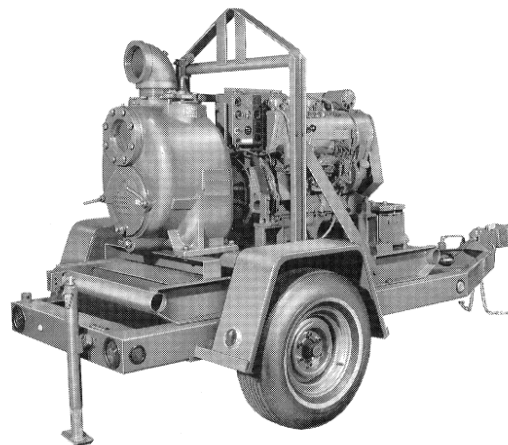
**Oil Level Sight Gauge.**

**2V6--BF4L1011--SPA ONLY:** Liquid Level Controls: Submersible Transducer\* and Electronic Pressure Switch (EPS) Control w/Start/Stop Setpoint Adjustments for Automatic Filling/Emptying.

\*50 Ft. (15 m) Standard Length; 150 Ft. (46 m) Maximum; Specify Length at Time of Order.

**Standard Equipment:** Soundproof Engine Enclosure – EPA 74 DbA at 23 feet (7 meters). 90° Discharge Elbow. Strainer.

**Optional Equipment:** Automatic Air Release Valve with Check Valve. Hard Iron Impeller, Seal Plate, and Wear Plate. Two Wheel Truck Assembly with P225/75R15 Pneumatic Tires. Over the Road Trailer (Meets D.O.T. and Transport Canada Requirements). Battery.



## 2V6-Deutz F4L912T -- SP SHOWN



## WARNING!

Do not use in explosive atmosphere or for pumping volatile flammable liquids.

## ENGINE SPECIFICATIONS

**Model:** Deutz F4L912T

**Displacement:** 167 Cu. In. (2.73 liter)

**Governor:** Mechanical.

**Type:** Four Cylinder, Four Cycle, Air Cooled Sound Attenuated Diesel Engine.

**Lubrication:** Forced Circulation.

**Air Cleaner:** Oil Bath.

**Oil Reservoir:** 11.6 U.S. Qts. (11 liter) Dry; 10 U.S. Qts. (9.5 liter) Refill.

**Fuel Tank:** 21 U.S. Gals. (80 liter).

**Full Load Operating Time:** 8 Hours.

**Starter:** 12V Electric.

**Standard Features:** Low Oil Pressure and V-Belt Failure Safety Shut Down Switches. Fuel Level Gauge. Instrument Panel with: Temperature Gauge, Oil Pressure Gauge, Ammeter, Hourmeter, Tachometer & Alternator Failure Light. Exhaust Silencer w/Weather Cap.

## DEUTZ PUBLISHED PERFORMANCE:

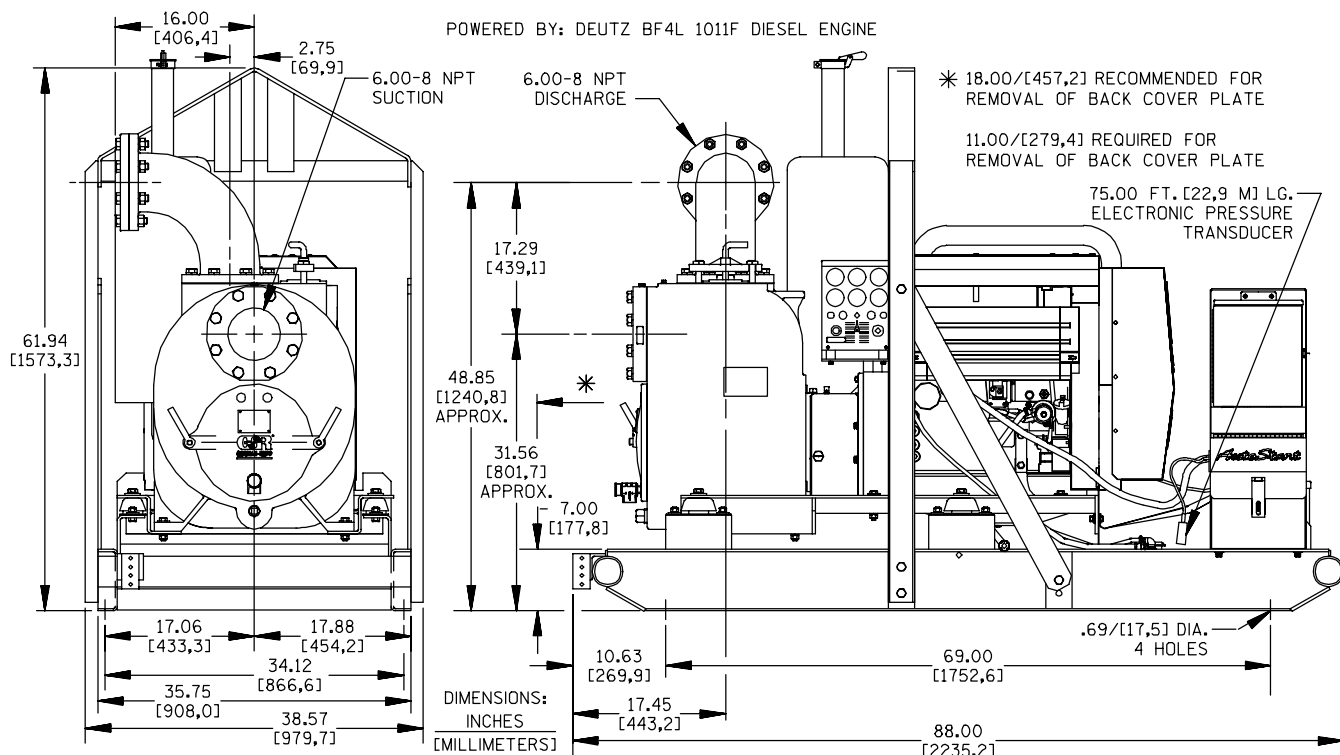
Maximum Continuous BHP 54 (41 kW) @ 1500 RPM

Maximum Dynamic BHP 54 (41 kW) @ 1500 RPM

# Specification Data

APPROXIMATE  
DIMENSIONS and WEIGHTS

	SKID BASE	2-WHEEL
NET WEIGHT:	2425 LBS. (1100 KG.)	2715 LBS. (1232 KG.)
SHIPPING WEIGHT:	2575 LBS. (1168 KG.)	2865 LBS. (1232 KG.)
EXPORT CRATE SIZE:	125 CU. FT. (3,5 CU. M.)	



2V6--F4L912T

